

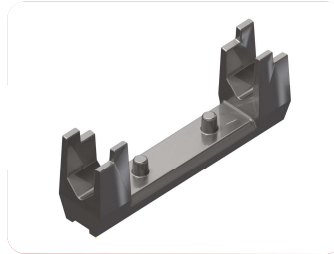
Centre Belt Connections

Connecting methods for centre belt



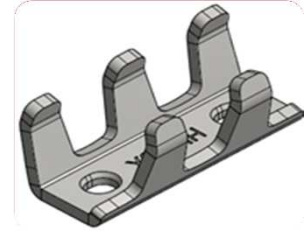
NOS

No extra material in flat areas. NOS rods are most used under joining clips.



KS clip

For diameters:
9 | 10 | 11 | 12



H-Pintle Clamp

For H-Pintle webs with 3 or more centre belts.



Highflex

Extra material added in flat areas, in vertical direction, making the area higher and stronger.



WB clip

| | | |
|----------------|--------|-----------|
| Belts 50 mm | CTC 20 | Rod 10 mm |
| Belts 50 mm | CTC 20 | Rod 8 mm |
| Belts 60-75mm | CTC 32 | Rod 10 mm |
| Belts 60-75 mm | CTC 30 | Rod 11 mm |
| Belts 60-75 mm | CTC 30 | Rod 11 mm |
| Belts 60-75 mm | CTC 32 | Rod 11 mm |
| Belts 60-75 mm | CTC 32 | Rod 12 mm |



4-lips Clamp

For webs with 12x6 strips / rods with 3 or more centre belts.



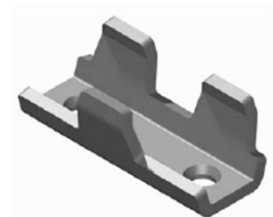
Superflex

Extra material added in flat areas, in horizontal direction, making the area wider and stronger.



P clip

| | | |
|-------------|--------|-----------|
| Belts 20 mm | 1 Hole | Rod 8 mm |
| Belts 20 mm | 1 Hole | Rod 10 mm |
| Belts 20 mm | 1 Hole | Rod 11 mm |
| Belts 20 mm | 1 Hole | Rod 12 mm |
| Belts 30 mm | 1 Hole | Rod 11 mm |



3-lips Clamp

For V-Pintle webs with 3 or more centre belts.