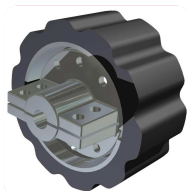


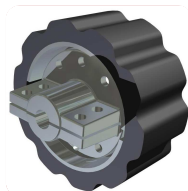
PU Sprockets

Less wear on rod and sprocket



GW 32-16

PITCH: 32
 \varnothing : 183
 Width: 80
 Teeth: 16
 Loose hub



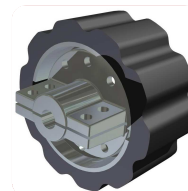
GW 35-17

PITCH: 35
 \varnothing : 210
 Width: 80
 Teeth: 17
 Loose hub



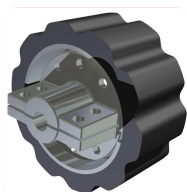
GW 36-14

PITCH: 36
 \varnothing : 180
 Width: 80
 Teeth: 14
 Loose hub



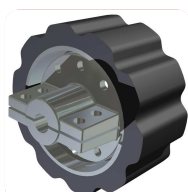
GW 36-16

PITCH: 36
 \varnothing : 204
 Width: 80
 Teeth: 16
 Loose hub



GW 40-15

PITCH: 40
 \varnothing : 210
 Width: 80
 Teeth: 15
 Loose hub



GW 45-13

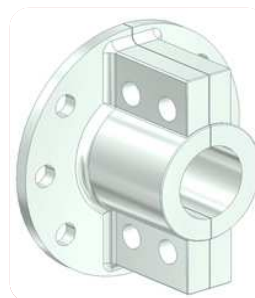
PITCH: 45
 \varnothing : 202
 Width: 80
 Teeth: 13
 Loose hub



GW 50-10

PITCH: 50
 \varnothing : 180
 Width: 80
 Teeth: 10
 Loose hub

HUBS FOR ALL PU-SPROCKETS	BORE
Hub GW Stock bore > 20	± 20
Hub GW bore 25	25
Hub GW bore 30	30
Hub GW bore 35	35
Hub GW bore 40	40
Hub GW bore 45	45
Hub GW bore 50	50



PU Sprockets

Less wear on rod and sprocket



GW 32-22 S

PITCH: 32
∅ : 260
Width: 60
Teeth: 22
 Loose hub



GW 35-20 S

PITCH: 35
∅ : 260
Width: 60
Teeth: 20
 Loose hub



GW 40-18 S

PITCH: 40
∅ : 265
Width: 60
Teeth: 18
 Loose hub



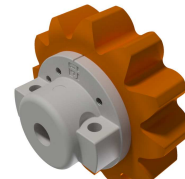
ZP 32-12

PITCH: 32
∅ : 157
Width: 22
Teeth: 12
 Loose hub



ZP 32-14

PITCH: 32
∅ : 178
Width: 22
Teeth: 14
 Loose hub



Wide ZP 32-12

PITCH: 32
∅ : 157
Width: 45
Teeth: 12
 Loose hub

HUBS FOR ALL PU-SPROCKETS	BORE
Hub GW Stock bore > 20	± 20
Hub GW bore 25	25
Hub GW bore 30	30
Hub GW bore 35	35
Hub GW bore 40	40
Hub GW bore 45	45
Hub GW bore 50	50

