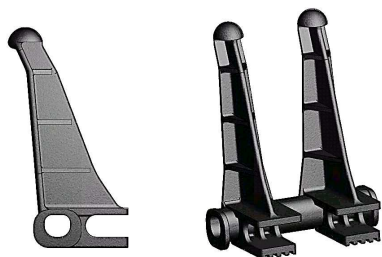


# Special Flights

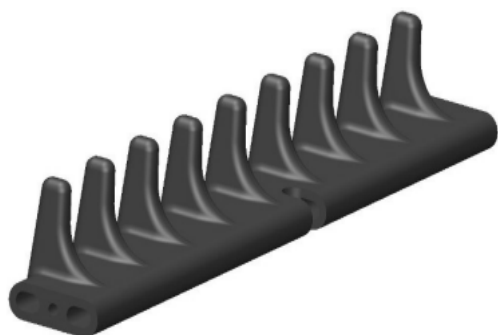
For all different applications



## K-EL Flight

Plastic element flight, mostly used in beet industry.

Width of 1 element: 155 mm  
 Height: 175 mm  
 Finger distance: 85 mm  
 Max. rod diameter: 19 mm



## PU-flight

Available in different sizes, see figure at the right.

LENGTH	ROD Ø	HEIGHT	FINGER DISTANCE x FINGER WIDTH
550	14	84	75 x 8
550	14	140	70 x 8
640	14	80	70 x 9
645	14	100	77,5 x 9
645	14	103	75 x 9
645	14	110	70 x 9
770	14	110	70 x 12
770	12	110	70 x 12



## Adjustable PU-finger

PU element flight: 40mm  
 Width of 1 element: 300mm  
 Height: 300mm  
 Finger distance: 21,5 mm  
 Max. rod diameter: 12 mm



## PA 460 Flight

PA element flight:  
 Width of 1 element: 460 mm  
 Height: 110 mm  
 Finger distance: 70 mm  
 Max. rod diameter: 14 mm