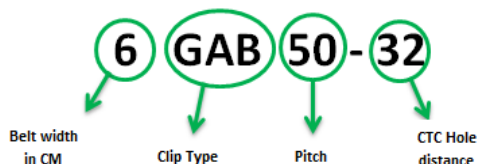


Joining Clips

Easy dismounting of webs



JOINING CLIP TYPE										
PITCH	AB	AF*	G	GAB	BS Screwed	BS Riveted	BC	BSV (Pintle)	GBS	CC
28	4 AB 28-20	5 AF 28-20	4 G 28-20	6 GAB 28-20	6 BS 28-32					6 CC 28-32
	4 AB 28-24	5 AF 28-24	5 G 28-20	6 GAB 28-30						
		6 AF 28-30	6 G 28-32	6 GAB 28-32						
32	4 AB 32-20	5 AF 32-20	5 G 32-20	5 GAB 32-20	5 BS 32-20	5 BS 32-32				6 CC 32-32
		6 AF 32-32	6 G 32-30	6 GAB 32-32	6 BS 32-32	6 BS 32-20				
			6 G 32-32							
35			6 G 35-30		6 BS 35-32	5 BS 32-20	6 BC 35-20	6 BSV 35-30	7,5 GBS 35-20	
			6 G 35-32		6 BS 35-30	6 BS 35-32	6 BC 35-30	6 BSV 35-32	7,5 GBS 35-32	
							6 BC 35-32			
36	4 AB 36-20	5 AF 36-20	5 G 36-20	6 GAB 36-20						6 CC 36-32
	6 AB 36-20	6 AF 36-30	6 G 36-30	6 GAB 36-30						
		6 AF 36-32	6 G 36-32	6 GAB 36-32			6 BC 40-30			
40		5 AF 40-20	4 G 40-20	6 GAB 40-20	6 BS 40-32	5 BS 40-20	6 BC 40-32	6 BSV 40-30	7,5 GBS 40-32	
		5 AF 40-24	6 G 40-20	6 GAB 40-30		6 BS 40-32		6 BSV 40-32	7,5 GBS 40-20	
		6 AF 40-30	6 G 40-30	6 GAB 40-32						
		6 AF 40-32	6 G 40-32							
42	5 AB 42-24	5 AF 42-20	6 G 42-20	6 GAB 42-32	6 BS 42-32					6 CC 42-32
		6 AF 42-32	6 G 42-32							
43									7,5 GBS 43-20	
									7,5 GBS 43-32	
44				6 GAB 44-20			6 BC 44-32			
				6 GAB 44-30						
				6 GAB 44-32						
45		5 AF 45-20	6 G 45-30	6 GAB 45-32	6 BS 45-32	6 BS 45-32				6 CC 45-32
		6 AF 45-32	6 G 45-32							
50	4 AB 50-20	5 AF 50-20	6 G 50-30	6 GAB 50-20	6 BS 50-32		6 BC 50-32		7,5 GBS 50-20	6 CC 50-32
		6 AF 50-32	6 G 50-32	6 GAB 50-30					7,5 GBS 50-32	
				6 GAB 50-32						
56		5 AF 56-32								



*AF-clips also available in Stainless Steel:

6AAF 28-32 / 6AAF 32-32 / 6AF 36-32 / 6AF 40-32
6AF 42-32 / 6AF 45-32 / 6AF 50-32

Joining Clips

For every application a proper clip



AF-series (Stainless Steel version available)
AF-clips pitch 28 and 32 have 2 rivet holes. Larger pitches with 4 rivet holes.



BS-series.
Clips with replaceable bushings.
2 Options available:
Riveted or Screwed On.



G-series.
G-clips pitch 28 and 32 have 2 rivet holes. Larger pitches with 4 rivet holes.



GBS-series.
Joining Rod can be secured. Male + Female or Double Pivot available.



BC-series.
BC-clips are designed for High Profile traction belts, therefore only available in pitches 35, 40, 44 & 50.



Heavy Duty Clip (HDC).
Available in every pitch. 2 or 4 holes
Completely hardened
1 or 2 loose bottom plates
Screwed-on



AB-series.
AB-clips pitch 28 and 32 have 2 rivet holes. Larger pitches with 4 rivet holes.
Not available in CTC32



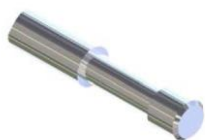
GAB (L)-series.
GAB clips have 2 rivet holes.
GAB L clips (loose bottom plate) have 4 rivet holes.



BSV-series.
Clips with replaceable bushings. Designed for Pintle webs. Joining Rod no longer required.



CC-series.
CC clips are made off Cast Steel, which allows us to weld on. Connected with 2, traction belt friendly, loose bottom plates.



Joining Rod style for:
G / BC / AB / HDC /
GAB (L) / CC-Clips



Joining Rod style for:
AF / GBS-Clips



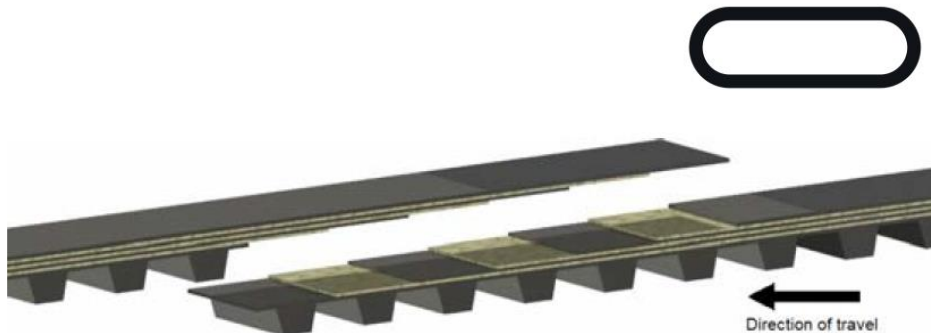
Joining Rod style for:
BS-Clips



Joining Bolt for:
BSV-Clips (Pintle belts)

Endless / Overlap joints

Heavy Duty Applications



Endless Joint Connections:

- An endless vulcanized joint has the highest tensile strength of all joint.
- Offers 70% of the traction belting's tensile strength.
- Uninterrupted belt profile, especially suitable for high profile cam drive.
- Always preferred if the machine design makes this a practical option. One side of the machine must be detachable for belt replacement purposes, or the frame's central cross member must be detachable.
- Subject to the belt pitch, the belt ends are overlapped over 5-8 pitches, in 2 or 3 layers.
- A decal with arrow indicates the direction of travel.
- Minimum end roller diameter 110mm is recommended.
- 1200 mm is the shortest possible length.



Lap Joint Connections:

- Recommended for heavy duty applications where endless vulcanized connections are impractical.
- Offers 50% of the traction belting's tensile strength.
- Uninterrupted belt profile, especially helpful for high profile cam drive.
- The belt ends are stepped in either 2 or 3 layers.
- Minimum end roller diameter 110mm is recommended.
- Rods are supplied loose with the conveyer, together with a lap joint set (screws and threaded plates)
- Most used lap joint: 2-2-2
- Most used lap joint in heavy applications, such as Sugar Beet: 3-3