

Traction Belts

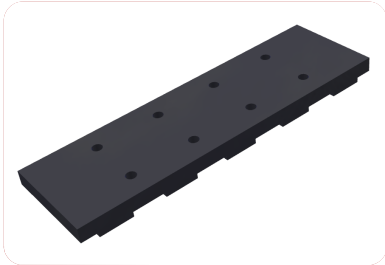
Lower stretch, longer lifetime

TYPE	WIDTH	LOAD STRAIN	PITCH																
			20	22	28	32	33	34	35	36	37	40	42	43	44	45	50	56	60
EN0300	20/30/40 50/60/75	TN 900	█	█	█	█	█	█	█	█	█	█	█	█	█	█	█	█	█
EN0300	60	TN 1200											█				█	█	█
EN0900	40/50/60 75/100	TN 900			█					█			█			█			█
EN0900	60/75	TN 1200											█					█	█
EN1200P	60/75	TN 1200																█	
DN0309	50/60/75	TN 900			█	█					█		█	█			█	█	
DN0309	60/75	TN 1200																█	█
DN0909	60/75	TN 900								█			█				█	█	
DN0909	50/60/75	TN 1200								█			█		█	█			█
DN1209P	60/75	TN 1200											█					█	█
G0505	60	TN 900								█			█			█	█	█	
SOLAR BELT EN0300	50/60/75	TN900			█	█					█			█			█	█	█
SOLAR BELT EN0900	50/60/75	TN900								█			█	█					
HYDROBELT EN0300	60	TN1000			█	█					█			█					
HYDROBELT DN0909	60	TN1000											█			█			
FOOD GRADE LOW PROFILE	60	TN1000	█	█	█	█	█	█	█	█	█	█	█	█	█	█	█	█	█
FOOD GRADE HIGH PROFILE	60	TN1000	█	█	█	█	█	█	█	█	█	█	█	█	█	█	█	█	█

AVAILABLE / STOCK
 AVAILABLE ON REQUEST / NO STOCK

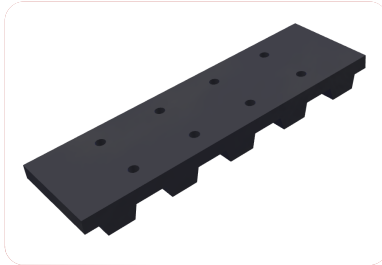
Traction Belts

Lower stretch, longer lifetime



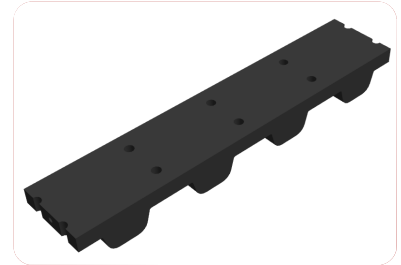
EN0300 (TN900 & TN1200)

- Friction Drive Rollers
- HS / RT / KW / Z / PU – sprockets
- 3 mm cams
- 8 mm (TN900) / 9 mm base (TN1200)



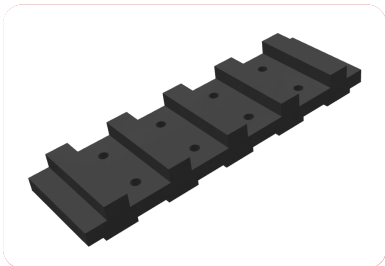
EN0900 (TN900 & TN1200)

- Friction Drive Rollers
- N / NC / KW / PU – sprockets
- 9 mm (drive-) cams
- 8 mm (TN900) / 9 mm base (TN1200)



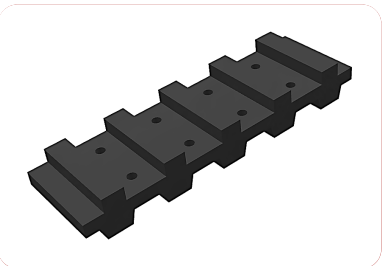
EN1200 Parabolic Cam (TN1200)

- Friction Drive Rollers
- N / NC / KW / PU – sprockets
- 12 mm (drive-) cams
- 10,5 mm base



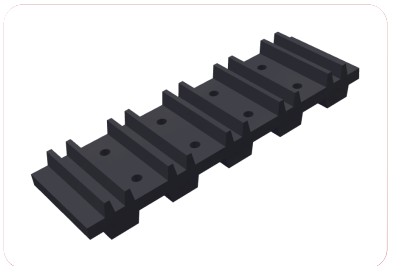
DN0309 (TN900 & TN1200)

- Friction Drive Rollers
- HS / RT / KW / Z / PU – sprockets
- 3 mm + 9 mm cams
- 8,5 mm (TN900) / 9 mm base (TN1200)



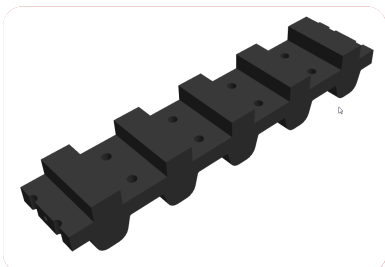
DN0909 (TN900 & TN1200)

- Friction Drive Rollers
- N / NC / KW / PU – sprockets
- 9 mm (drive-) cams + 9 mm cams
- 9 mm (TN900) / 9 mm base (TN1200)



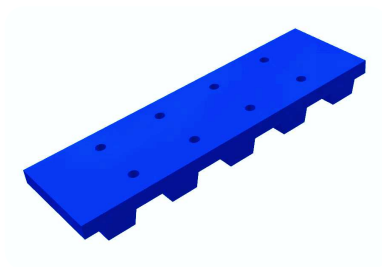
G0505 (TN900)

- Friction Drive Rollers
- N / NC / KW / PU – sprockets
- 8 mm (drive-) cams + 8 mm cams
- 8,5 mm base



DN1209 Parabolic Cam (TN1200)

- Friction Drive rollers
- N / NC / KW / PU – sprockets
- 12 mm (drive-) cams + 9 mm cams
- 10,5 mm base



Food Grade Belting

- Available on request

TN900: Load strain per 10mm traction belt width: 900 KGS
TN1000: Load strain per 10mm traction belt width: 1000KGS
TN1200: Load strain per 10mm traction belt width: 1200 KGS