

O.E.M - Drives

Rubber / PU Drives



076.04646

Size: 260 x 60
Pitch :28
Teeth: 26



076.04046

Size: 260 x 60
Pitch: 32
Teeth: 22



076.04047

Size: 260 x 60
Pitch: 35
Teeth: 20



076.04048

Size: 260 x 60
Pitch: 40
Teeth: 18



076.03521

Size: 189 x 60
Pitch :32
Teeth: 16



076.03447

Size: 185 x 60
Pitch :50
Teeth: 10



076.03514

Size: 215 x 60
Pitch :35
Teeth: 17



076.03504

Size: 217 x 60
Pitch :40
Teeth: 15



076.03505

Size: 212 x 60
Pitch :35
Teeth: 13



076.01046

Size: 132 x 58
Bore: 30



076.00655

Size: 132 x 65
Bore: 35



076.00823

Size: 168 x 63
Bore: 35



076.00704

Size: 194 x 60
Bore: 35



076.02509

Size: 194 x 80
Bore: 40



*This item is not a standard Stock item.
Ask for the current stock position.
In case of no stock > MOQ= 30 pcs.*

O.E.M - Drives

Rubber / PU Drives



076.02509

Size: 194 x 80
Bore: 40



076.02400

Size: 194 x 80
Bore: 40



076.00838

Size: 194 x 80
Bore: 50



076.00820

Size: 132x 65
Flange: 170
Bore: 35



076.00822

Size: 168x 63
Flange: 210
Bore: 35



076.01618

Size: 194x 60
Flange: 235
Bore: 35



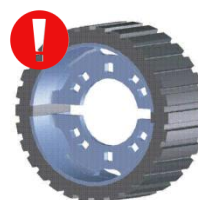
076.00912

Size: 100x 67
Flange: 136
Bore: 30



076.03535

Size: 200 x 80



076.04013

Size: 194 x 60



076.04059

Size: 194 x 80



076.04011

Size: 194 x 60
Flange: 235



076.01022

Size: 240 x 80



*This item is not a standard Stock item.
Ask for the current stock position.
In case of no stock > MOQ= 30 pcs.*

O.E.M - Rollers

Rubber / PU Rollers



076.00759

Size: 100 x 77
Flange: 136



076.00671

Size: 128 x 89



088.00168

Size: 90 x 30
M12



088.00243

Size: 62 x 21
M12



088.00315

Size: 95 x 62
Flange: 132
M24



200.00807

Size: 100 x 65
Flange: 145



200.02869

Size: 100 x 65
Flange: 145



200.05168

Size: 195 x 40
M16 x 37



200.00807

Size: 195 x 62
M16 x 40



200.06349

Size: 70 / 40 x 120



200.07970

Size: 130 x 78



200.08260

Size: 128 x 60
Flange: 160



200.09304

Size: 130 x 78



200.09305

Size: SPECIAL
DESIGN



200.10202

Size: 80 x 45
Flange: 108
M16 x 28



*This item is not a standard Stock item.
Ask for the current stock position.
In case of no stock > MOQ= 30 pcs.*

O.E.M - Rollers

Rubber / PU Rollers



200.11197

Size: 100 x 60
Flange: 145



200.11379
200.46387

Size: 100 x 75



200.28967

Size: 75 x 43
M16



200.16029

Size: 100 x 77
Flange: 136
M24 x 25



200.17208

Size: 60 x 22
M12



200.24936

Size: 77x 55
M16



200.27578

Size: 75 x 60
M16



200.27581
200.53261

Size: 95 x 60
M16



200.27584

Size: 95 x 54
Flange: 130
M16



200.27673

Size: 75 x 52
Flange: 130
M16



200.27931

Size: 75 x 52
Flange: 105
M16



200.28967
200.54884

Size: 75 x 43
M16



200.29585

Size: 100 x 65
Flange: 145



200.29586

Size: 80 x 45
Flange: 105



200.30645

Size: 60 x 41
M16



*This item is not a standard Stock item.
Ask for the current stock position.
In case of no stock > MOQ= 30 pcs.*

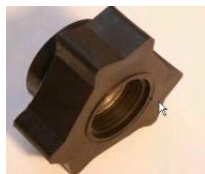
O.E.M - Rollers

Rubber / PU Rollers



200.32845

Size: 95 x 65
Flange: 130
M16



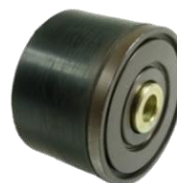
200.34296

SHAKER
Size: SPECIAL DESIGN



200.38132

Size: 95 x 53
Flange: 130
M16



200.39136

Size: 95 x 60
M16



200.39267

Size: 150 x 52
Flange: 190
M16



200.40200

Size: 150 x 45/60
M16



200.40603

Size: 90 x 44
M12



200.41100

Size: 75 x 52
Flange: 105
M16



200.41630

Size: 75 x 42
M16



200.42986

Size: 195 x 60
M16



200.42985

Size: 195 x 60
Flange: 240
M16



200.46340

Size: 100 x 67
Flange: 130
M24



200.49303

Size: 95 x 60
M16



200.49508

Size: 128 x 74
Flange: 160
M16



200.50894

Size: 75 x 105
M16



*This item is not a standard Stock item.
Ask for the current stock position.
In case of no stock > MOQ= 30 pcs.*

O.E.M - Rollers

Rubber / PU Rollers



602.00052

Size: 95 x 60
M16



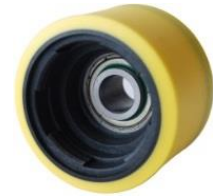
602.00053

Size: 75 x 62
M16



602.00204

Size: 95 x 55
Flange: 130
M16



602.00070

Size: 75 x 50
M16



602.00281

Size: 75 x 55
Flange: 105
M16



623.00011

Size: 100 x 28
M16



623.00012

Size: 123 x 28
M16



602.00288

Size: 75 x 55
Flange 130
M16



*This item is not a standard Stock item.
Ask for the current stock position.
In case of no stock > MOQ= 30 pcs.*