

**CLEARBOX<sup>®</sup>**  
SBR Flex Series

**JÄGER**  
Umwelt-Technik



BROCHURE

**BE MOBILE AND  
STAY FLEXIBLE**



# CLEARBOX<sup>®</sup>

SBR Flex Series

## BE MOBILE AND STAY FLEXIBLE

**CLEARBOX<sup>®</sup>** is a compact and customizable wastewater treatment plant, which is incorporated into an ISO container. The **CLEARBOX<sup>®</sup>** Flex Series can treat both municipal and biodegradable industrial wastewater for discharge or reuse purposes such as irrigation or process water.

## APPLICATIONS

- Rural Housing
- Remote Factories
- Working Camps
- Hotels and Resorts
- Temporary Response
- Navy, Yacht, and Cruise
- Pilot Plant and Research Facilities
- Refugee and Peacekeeping Camps

## KEY BENEFITS

- Flexibility and Scalability
- Low Maintenance
- High Degree of Customization
- Low Operational and Energy Costs
- Durable Material
- High Effluent Quality
- Small Footprint
- Excellent Settling Properties

## Typical Range of Effluent Quality

Capacity*	SVI	NH <sub>4</sub> -N	NO <sub>3</sub> -N	COD <sub>Filtered</sub>	P
m <sup>3</sup> /d	mL/g	mL/g	mL/g	mL/g	mL/g
40 - 70	65 - 85	<1	<5	<70	<1

\*Treatment capacity depends on influent quality, wastewater temperature, target of treatment (biological C, N, and P removal) and reaction time

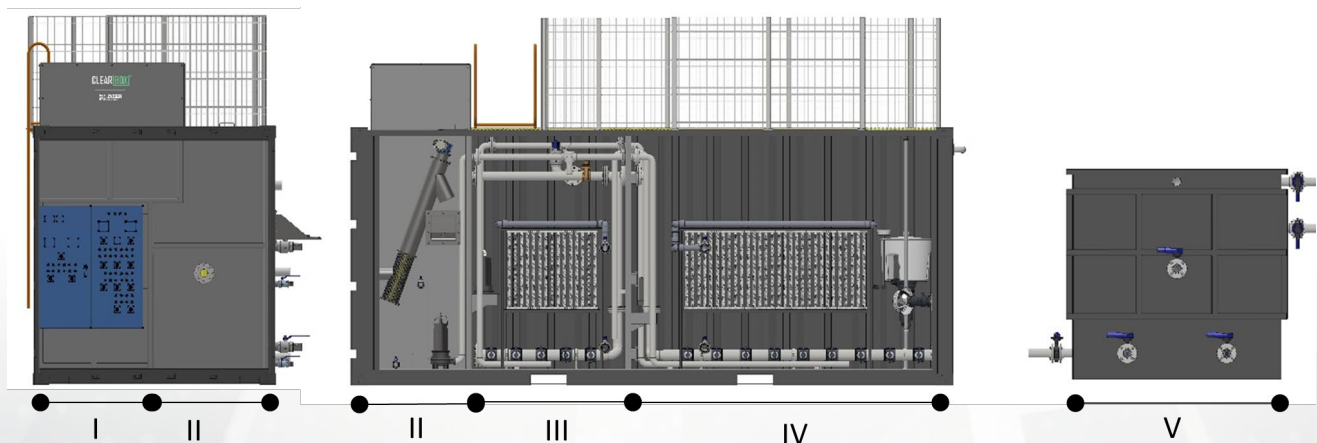




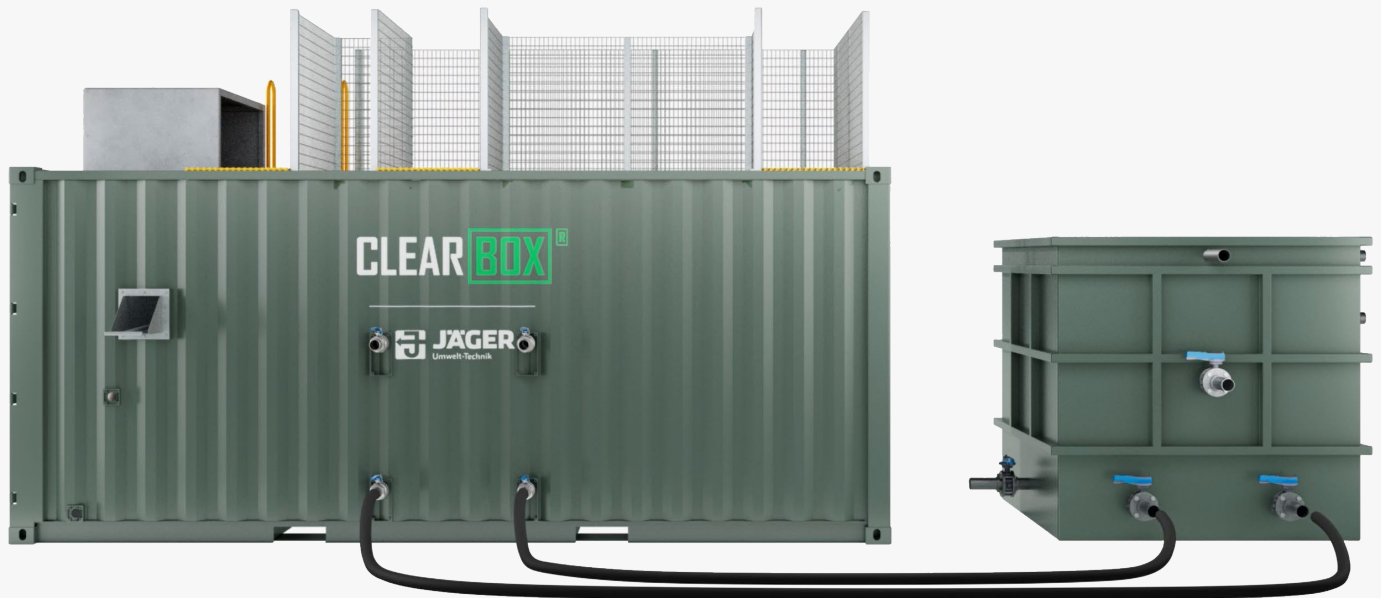
**CLEARBOX®**  
SBR Flex Series

#### SBR FLEX SERIES CONSISTS OF FIVE ZONES:

- I. Control and equipment room
- II. Automatic screening chamber and fats, oil and grease (FOG) separation
- III. Flexible zone with CLEARTEC®
- IV. Sequencing Batch Reactor (SBR) CLEARTEC®
- V. Multi-functional with tank







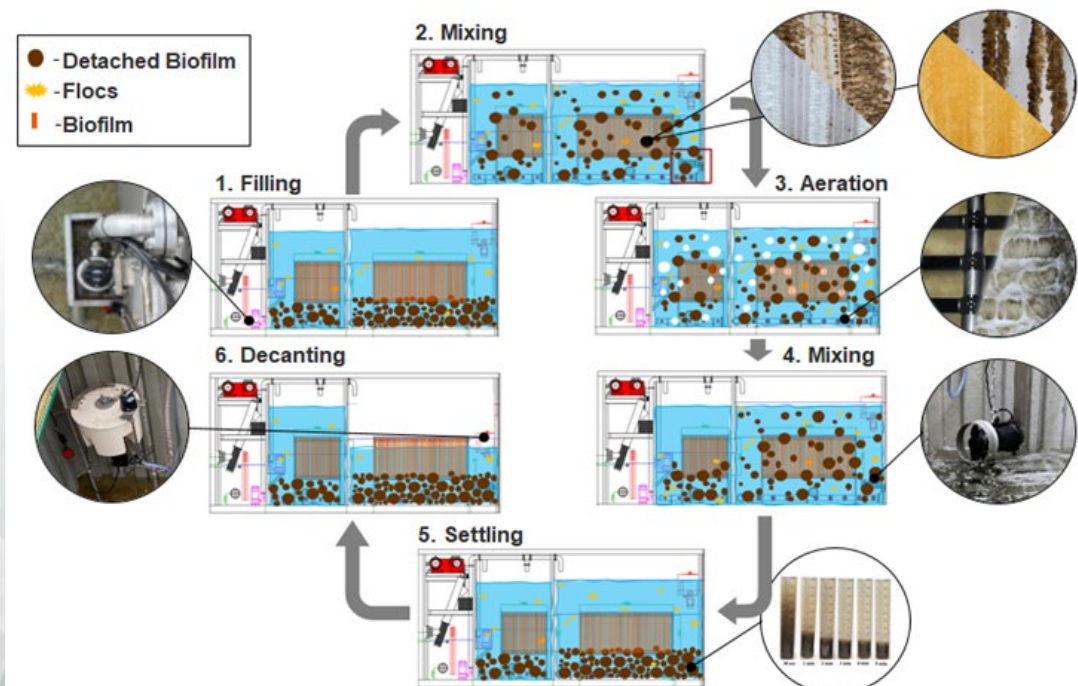
# CLEARBOX<sup>®</sup>

SBR Flex Series

## PROCESS:

**CLEARBOX<sup>®</sup>** is based on a Sequencing Batch Reactor (SBR) process; it consists of six phases, where existence and duration of reaction phases is very much dependent on wastewater characteristics and target of treatment (i.e. organic reduction, nitrification, nitrification-denitrification, or biological nutrients removal (BNR)).

- |      |         |                                           |
|------|---------|-------------------------------------------|
| Step | 1:      | Mechanical pretreatment and filling phase |
| Step | 2 to 4: | Reaction phases                           |
| Step | 5:      | Settling phase                            |
| Step | 6:      | Discharge phase                           |





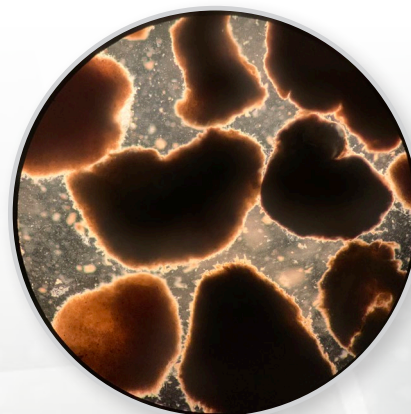
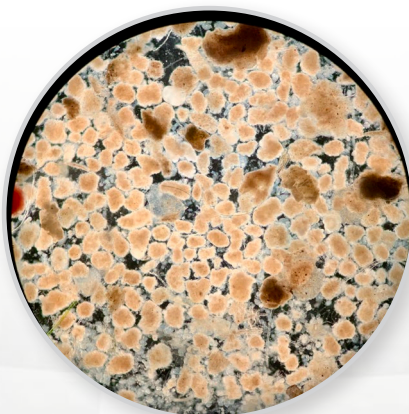
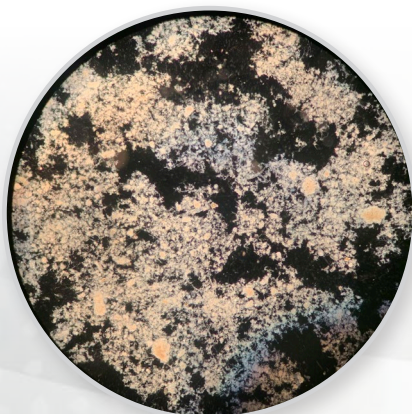
# CLEARBOX<sup>®</sup>

SBR Flex Series

## COMPONENTS:

As shown in the previous page, raw wastewater will initially flow into a screening chamber, where filterable materials are screened. This is an essential step to avoid clogging of the pumps and the biocarrier textile media. Then, depending on pollution load, the reaction phase can start immediately in the flexible zone (e.g. for biological pretreatment of organic rich wastewater) and/or in the SBR zone. The reaction phases consist of an anaerobic mixing phase, followed by aerobic and/or anoxic phases to achieve phosphorous elimination, nitrification, and nitrification-denitrification, respectively. The final steps are settling and decanting phases where biomass separation and discharge of the treated wastewater takes place, consecutively.

One of the main advantages of **CLEARBOX<sup>®</sup>** is incorporating **CLEARTEC<sup>®</sup>** and a multi-purpose tank, which improve sludge settleability (a patented solution) and facilitates generation of granular and granular-like biomass (a patent pending process), respectively. This third fraction of sludge has excellent settling properties (typically stated as SVI) and higher nitrification rate compared to the conventional biomass. The low SVI value from the sludge of **CLEARBOX<sup>®</sup>**, allows for a higher exchange volume, while reducing the required settling and reaction time.







## CONTACT

Tel +49 511 - 646 44 0

Fax +49 511 - 646 44 499

[www.jaeger-envirotech.com](http://www.jaeger-envirotech.com)

[info@jaeger-envirotech.com](mailto:info@jaeger-envirotech.com)



Jäger Umwelt-Technik GmbH

Lohweg 1

30559 Hannover

#### Disclaimer

We exclude any liability for the information and product presentations provided. For contents of a technical nature, these are based on the status of their publication. Existing copyrights and rights to names remain unaffected.

Grafic, Photos: ©Adobe Stock, Jäger data base